

PRE-INSTALLATION SPECIFICATIONS

QST-DCM

-chilled and ambient solutions

quateau®
SmartTap



CHILLED



AMBIENT

MADE
IN GREAT
BRITAIN



riba
product
selector

NSPlus

110V/60Hz ~ 220V /50Hz

Maya Chiller

QST-DCM

PRE-INSTALLATION SPECIFICATION

SPECIAL FEATURES

- Delivers high volumes of chilled and ambient water
- Fits into a standard 24" (610 mm) cabinet
- Low energy consumption
- Highest performing insulation
- Most robust and reliable system available
- Delivers upto 9.8 gallons (45 liters) of chilled water per hour at 40-45°F (4-7°C)
- Uses S245 chiller
- Easy to use push-button control
- DDA compliant controls
- Faucets are constructed of solid stainless-steel for optimal life and durability
- Manufactured in UK

EQUIPMENT DIMENSIONS

- System is installed in component form
- Fits in standard cabinet 24" x 24" x 34.5" (610 mm x 610 mm x 876 mm)
- Can fit in a smaller cabinet, see drawings for further guide
- Individual component dimensions on drawing page

QST-DCM

PRE-INSTALLATION SPECIFICATION

PRODUCT DISPENSE

SITE PREPARATION DETAILS

- 1/4" isolated shut off valve on a water supply line
- Two (2) dedicated 15amp 110V-60Hz or 220V-50Hz circuits
- Maximum water pressure 60 psi
- Minimum water pressure 45 psi
- Maximum water temperature of 16°C or 60°F
- Minimum water flow 26.5 gallons (100 liters) per hour
- Work-surface cut per drawings to house tap

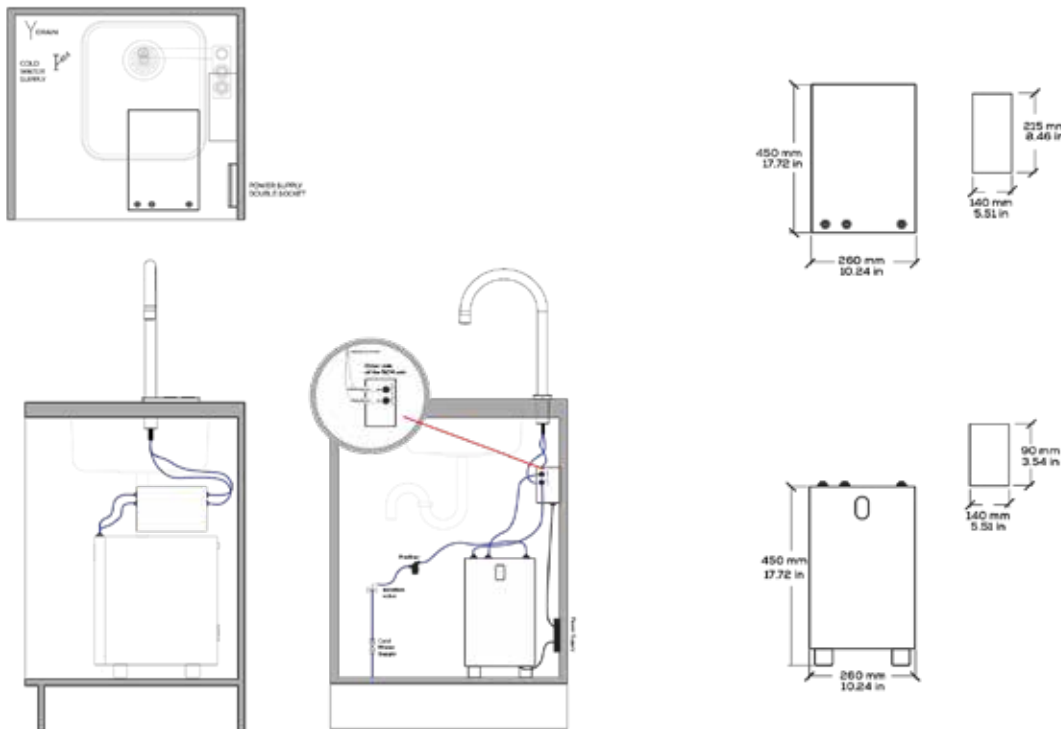
LOCATION OF SERVICES

- The cold water supplying the Quatreau system comes from the cold water riser that supplies cold water to the sink. Make sure you have an isolation valve to service the system.
- Power to be located in the cabinet as close to the DCM and Chiller as to not have power leads stretched across the cabinet.
- See drawings for further information

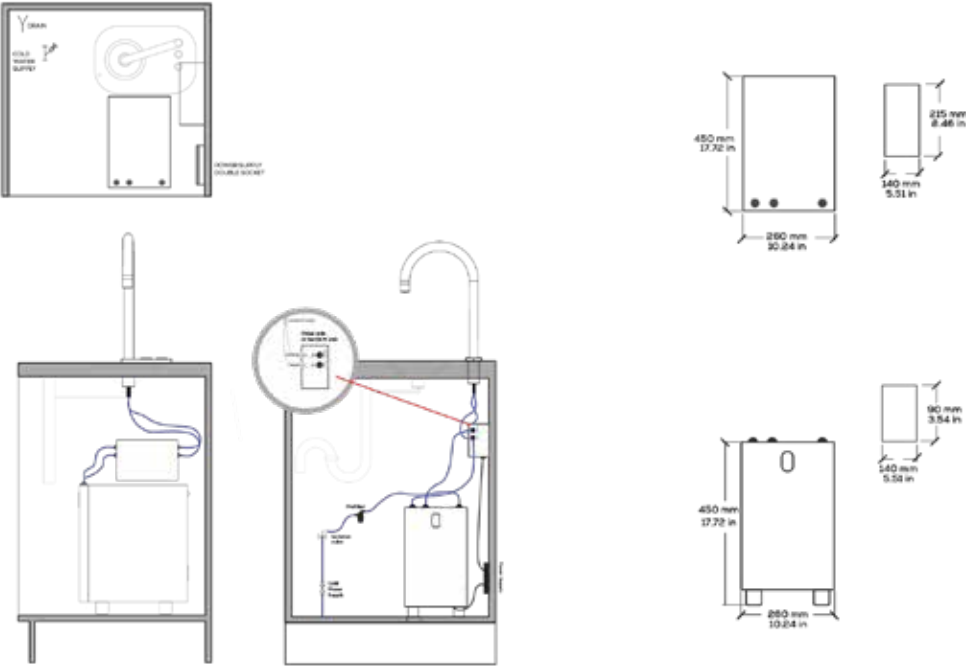
QUATREAU SMART TAP

TYPICAL INSTALLATION

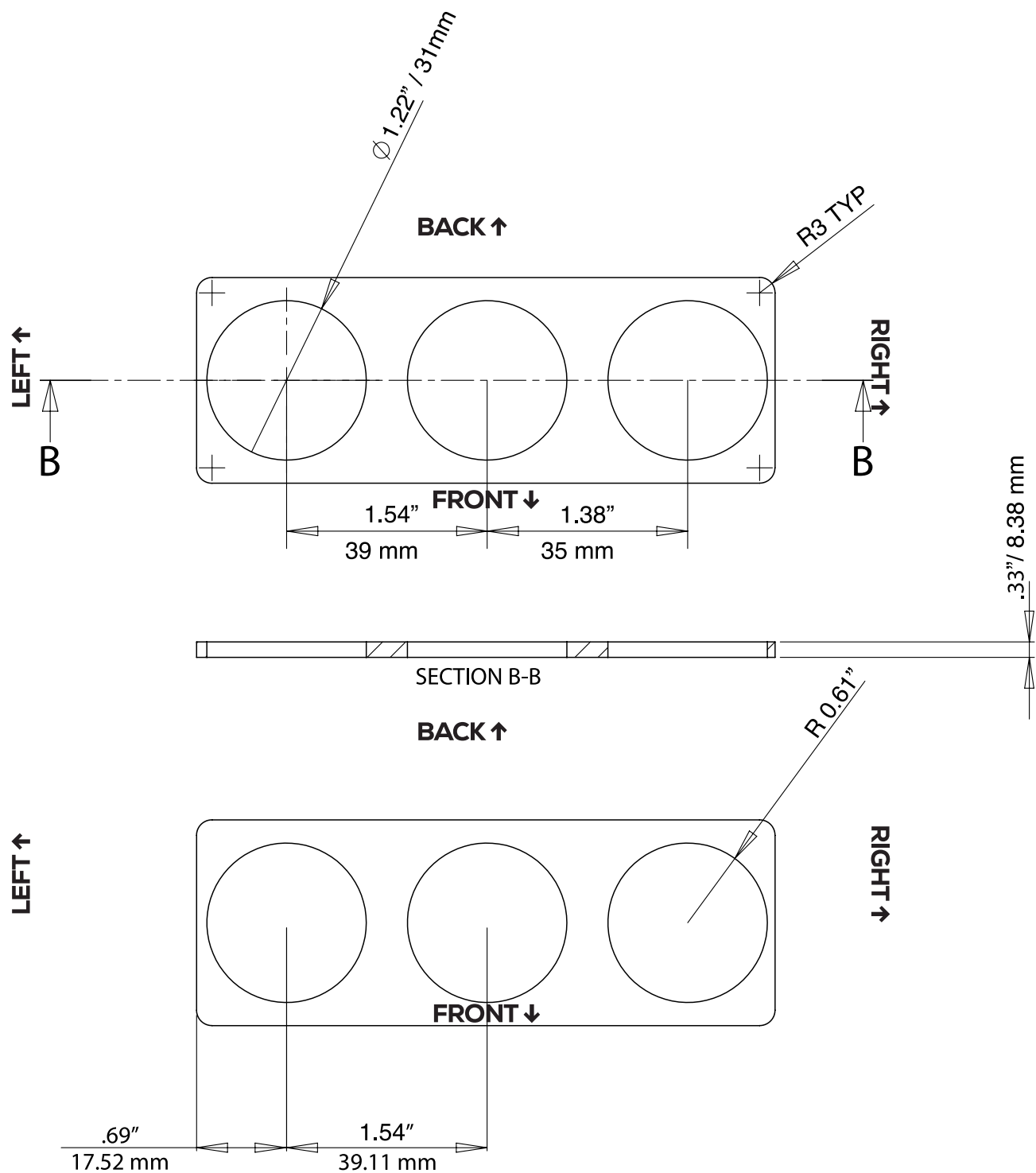
STAND ALONE



INTEGRATED SINK



QUATREAU SMART TAP
CUTTING TEMPLATE
sample only



NOTES:

Unless otherwise specified dimensions are converted to inches.

Distributed by: Global Water Solutions
Find out more at: www.Quatreau.com